



# SKYVIEW ESTATES

ROB RICE HOMES

- 2 Story Plan
- 2591 square feet
- 4 Bedroom + Bonus, 2.5 bathroom
- Granite slab or quartz counters in kitchen with full tile splash, gas range
- Hardwood or LVP in entry, kitchen, dining
- Solar panels, heat pump, hybrid hot water tank

# The DOGWOOD #2591



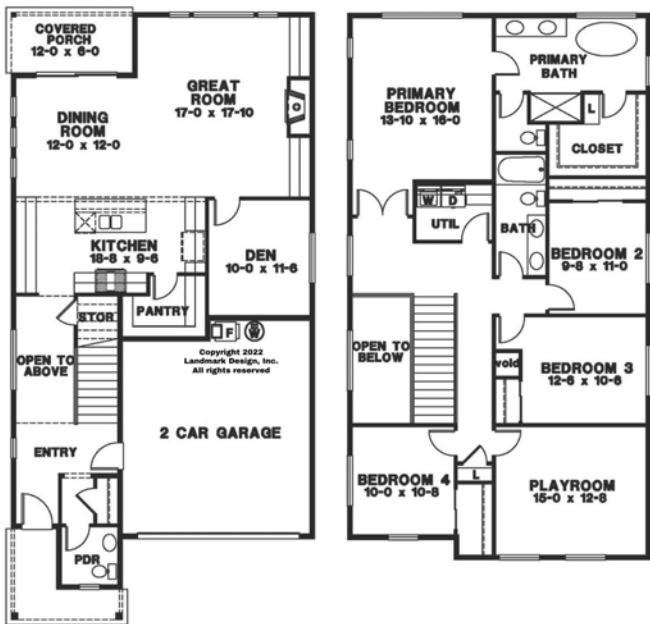
FINISHES ON COMPLETED HOMES WILL VARY FROM RENDERING

Elevation A



FINISHES ON COMPLETED HOMES WILL VARY FROM RENDERING

Elevation B



SCAN WITH YOUR CAMERA FOR MORE INFORMATION!



Vonna Madeley, ABR, CRS, GRI  
360.561.7888  
vonna.madeley@cbolympia.com

Leslie Shipe  
360.870.2530  
leslie.shipe@cbolympia.com

Jeanne Tranum, ABR, CRS, GRI  
360.481.2255  
jeanne.tranum@cbolympia.com

[www.ColdwellBankerTeam.com](http://www.ColdwellBankerTeam.com)



Homes in the Skyview Estates neighborhood are built, sold & warranted by Evergreen Heights, LLC, a separate entity that is a member of the Rob Rice Homes family of companies. Builder reserves the right to change features, plans, pricing & specifications without notice. Buyer to verify square footage. Features vary by home. 1/2022