



SKYVIEW ESTATES

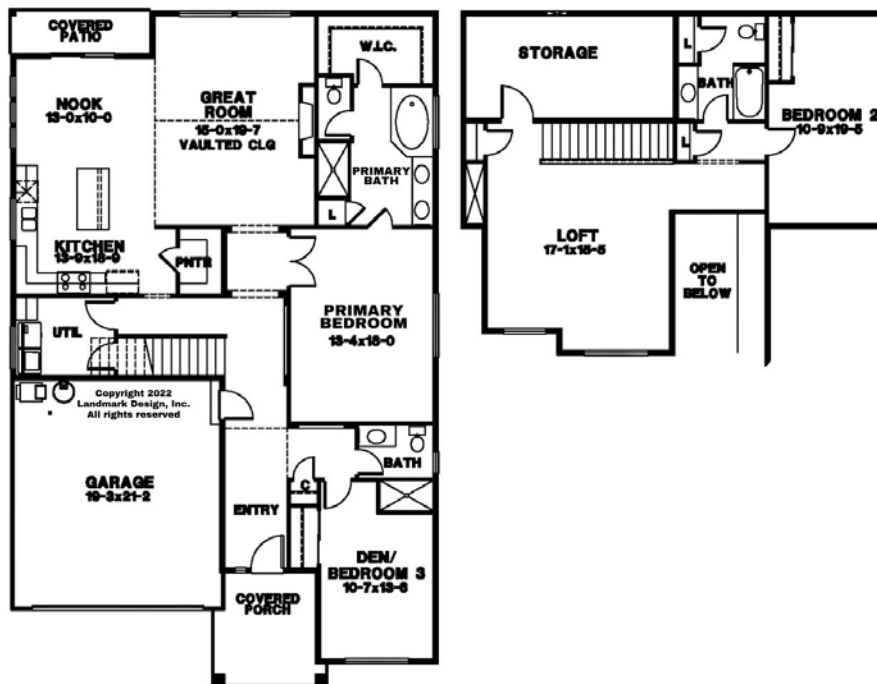
ROB RICE HOMES

The Linden #2548

- Main floor primary suite, loft up
- 2548 square feet
- 3 Bedroom, 2.75 bathroom
- Granite slab or quartz counters in kitchen with full tile splash, gas range
- Hardwood or LVP in entry, kitchen, dining
- Solar panels, heat pump, hybrid hot water tank



FINISHES ON COMPLETED HOMES WILL VARY FROM RENDERING



SCAN WITH YOUR CAMERA FOR MORE INFORMATION!



Vonna Madeley, ABR, CRS, GRI
360.561.7888
vonna.madeley@cbolympia.com

Leslie Shipe
360.870.2530
leslie.shipe@cbolympia.com

Jeanne Tranum, ABR, CRS, GRI
360.481.2255
jeanne.tranum@cbolympia.com

www.ColdwellBankerTeam.com



Homes in the Skyview Estates neighborhood are built, sold & warranted by Evergreen Heights, LLC, a separate entity that is a member of the Rob Rice Homes family of companies. Builder reserves the right to change features, plans, pricing & specifications without notice. Buyer to verify square footage. Features vary by home. 1/2022