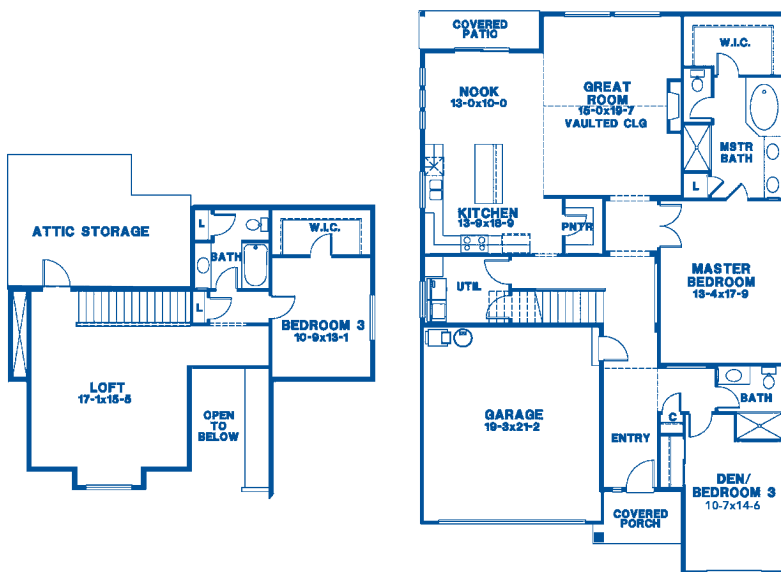




# BRADBURY

BY ROB RICE HOMES

The  
MADRONE #2543



- 2,543 square feet
- 3 bedrooms + loft, 2.75 baths
- Main floor master
- Slab granite or quartz kitchen counters with full tile backsplash
- Hardwood in entry, kitchen and dining
- 10 x 12 rear patio (as allowed by permitting)
- Fully landscaped with backyard fencing

**ROB RICE**  
HOMES  
Creating Exceptional Communities Since 1985

[www.robriohomes.com](http://www.robriohomes.com)  
[www.facebook.com/robriohomes](https://www.facebook.com/robriohomes)



For more information contact: **HEATHER KEATING** | 425.442.5538 | [heather@robriohomes.com](mailto:heather@robriohomes.com)  