



BRADBURY

BY ROB RICE HOMES

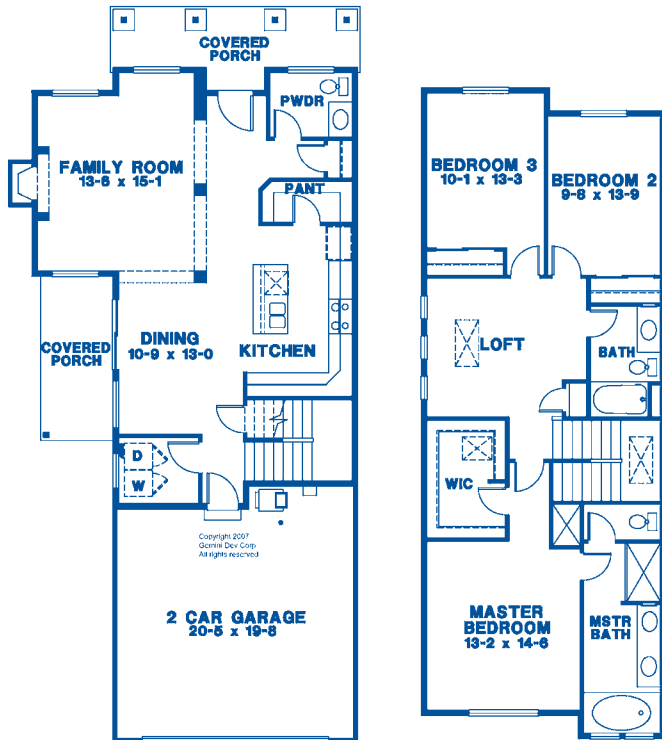
The
CYPRESS #1951



ELEVATION A



ELEVATION B



- 1,951 square feet
- 3 bedrooms + loft, 2.5 baths
- Hardwood entry, kitchen and dining
- Slab granite or quartz kitchen counters with full tile backsplash
- 5-piece master bath
- Covered front and side porch
- Fully landscaped with privacy fencing

ROB RICE
HOMES
Creating Exceptional Communities Since 1985

www.robricehomes.com
www.facebook.com/robricehomes



For more information contact: **HEATHER KEATING** | 425.442.5538 | heather@robricehomes.com  