

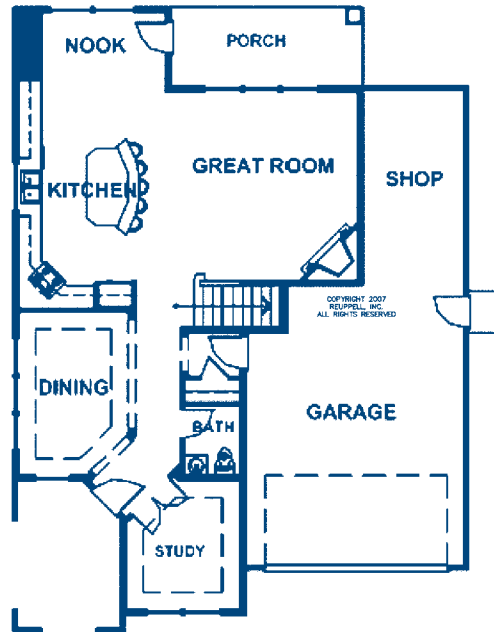
VILLAGES at South Hill PHASE II



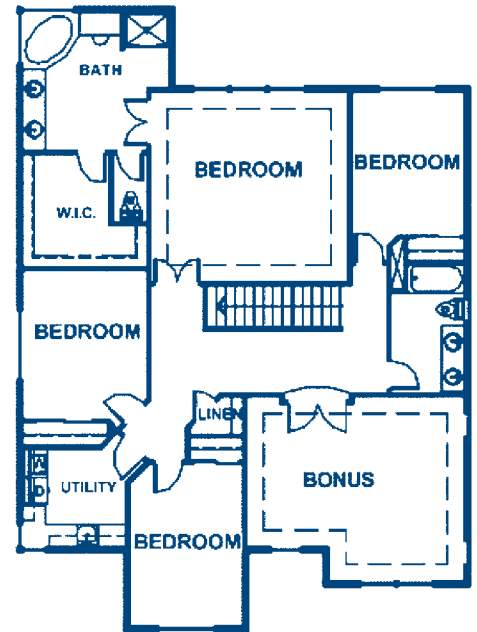
THE QUINCY #2950

- 2,950± square feet
- 4 bedrooms with large bonus room, 2-1/2 baths
- Formal dining
- Solid surface counters in kitchen and all bathrooms
- Hardwood entry, kitchen, dining & nook
- 5-piece master bath
- Upstairs laundry
- 10x12 patio (as allowed by permitting)

FLOOR PLAN #2950



MAIN FLOOR PLAN



UPPER FLOOR PLAN

epic
REALTY, INC.
Serving the South Puget Sound
area since 1989

ROB RICE
HOMES
Creating Exceptional Communities Since 1985

For sales information contact Heather Keating at 425.442.5538 04/2018
Visit us online at: www.robricehomes.com or www.facebook.com/robricehomes

Builder reserves the right to make changes to plan and specifications without notice. Features vary by plan and finishes on completed homes vary from rendering on flyer. Buyer to verify square footage. Each member of the Rob Rice Homes family is a separate limited liability company or corporation. Each of the Rob Rice Homes communities is developed, constructed, sold and warranted by a separate limited liability company or corporation. 1868 State Ave NE, Olympia, WA 98506.