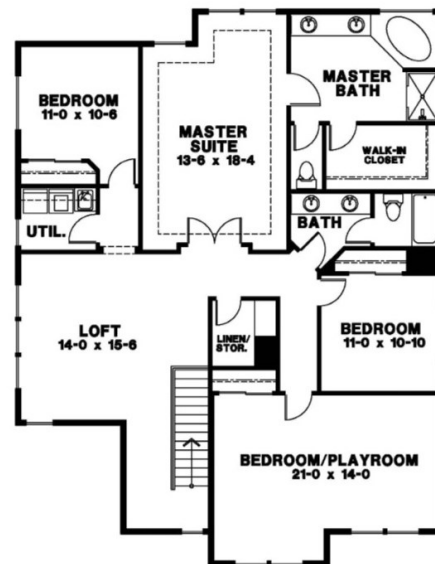
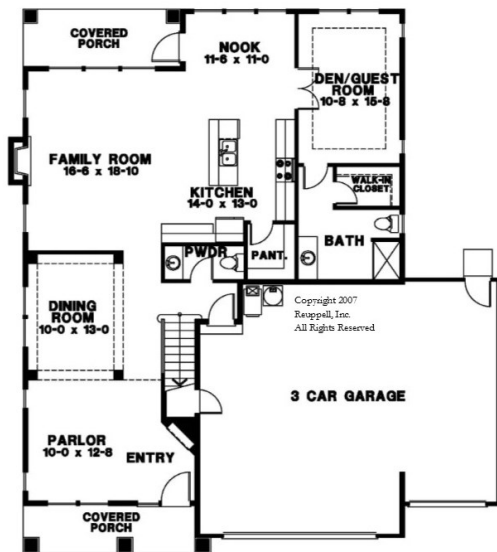




Sahalee Plan #3322 ✨

- 2 Story plan
- 3322 square feet
- 5 Bedroom + loft, 3.5 bath
- Main floor junior ste w/3/4 bath
- Granite slab or quartz counters in kitchen, baths, laundry
- Hardwood entry, kitchen, nook, family, living & dining room
- 5 pc. master bath w/full tile shower
- Covered front & back patio

Finishes on completed homes will vary from rendering



Some lots are subject to lot or presale premiums and availability is subject to change without notice. See plat map for details and lot availability. 10-6-2020



Coldwell Banker Team
VONNA | LESLIE | JEANNE

Vonna Madeley, ABR, CRS, GRI
360.561.7888
vonna.madeley@cbolympia.com

Leslie Shipe
360.870.2530
leslie.shipe@cbolympia.com

Jeanne Trnum, ABR, CRS, GRI
360.481.2255
jeanne.trnum@cbolympia.com

www.ColdwellBankerTeam.com



Homes in the Campus Estates neighborhood are built, sold & warranted by Evergreen Heights, LLC, a separate entity that is a member of the Rob Rice Homes family of companies. Builder reserves the right to change features, plans, pricing & specifications without notice. Buyer to verify square footage. Features vary by home.