



# CAMPUS PEAK

## POPLAR PLAN

### #2692



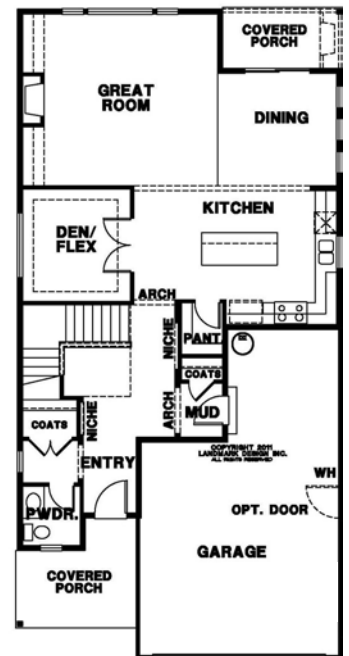
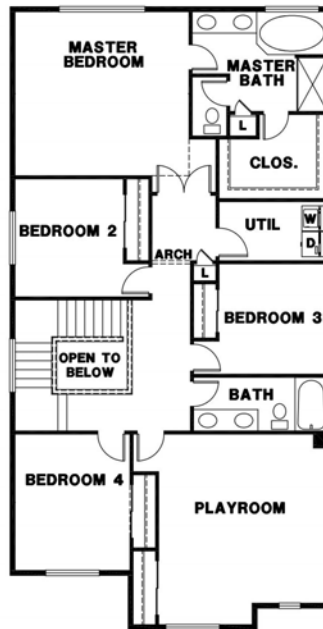
ELEVATION A



ELEVATION C

# 2 Story Plan

2692 square feet  
5 Bedrooms + Den, 2.5 Bath



*Finishes on completed homes will vary from rendering*



**Coldwell Banker Team**  
VONNA | LESLIE | JEANNE

Vonna Madeley, ABR, CRS, GRI  
360.561.7888  
vonna.madeley@cbolympia.com

Leslie Shipe  
360.870.2530  
leslie.shipe@cbolympia.com

Jeanne Tranum, ABR, CRS, GRI  
360.481.2255  
jeanne.tranum@cbolympia.com

[www.ColdwellBankerTeam.com](http://www.ColdwellBankerTeam.com)



Homes in the Campus Peak neighborhood are built, sold & warranted by Evergreen Heights, LLC, a separate entity that is a member of the Rob Rice Homes family of companies. Builder reserves the right to change features, plans, pricing & specifications without notice. Buyer to verify square footage. Features vary by home.

9-30-2020