



HAZEL PLAN

#2611



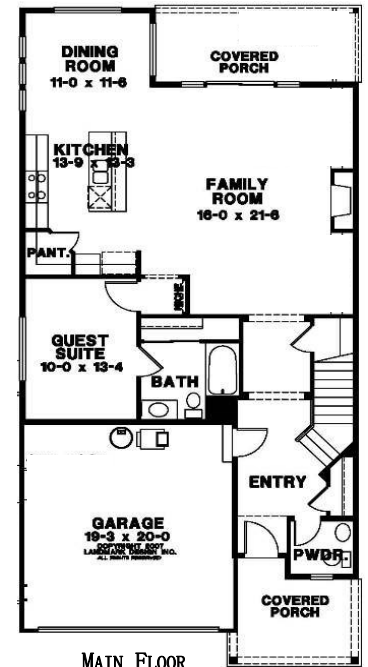
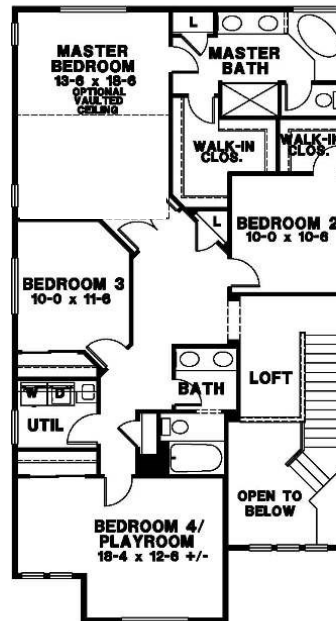
2 Story Plan

Main Floor Jr. Suite

2611 square feet

5 Bedrooms, 3.5 bath

UPPER FLOOR



MAIN FLOOR

Finishes on completed homes will vary from rendering



Coldwell Banker Team
VONNA | LESLIE | JEANNE

Vonna Madeley, ABR, CRS, GRI
360.561.7888
vonna.madeley@cbolympia.com

Leslie Shipe
360.870.2530
leslie.shipe@cbolympia.com

Jeanne Tranum, ABR, CRS, GRI
360.481.2255
jeanne.tranum@cbolympia.com

www.ColdwellBankerTeam.com



Homes in the Campus Peak neighborhood are built, sold & warranted by Evergreen Heights, LLC, a separate entity that is a member of the Rob Rice Homes family of companies. Builder reserves the right to change features, plans, pricing & specifications without notice. Buyer to verify square footage. Features vary by home.

9-30-2020