

Luxury RAMBLER

Plus an Abundance of Second Story Flexible Space—ALL ON 1.5 ACRES!



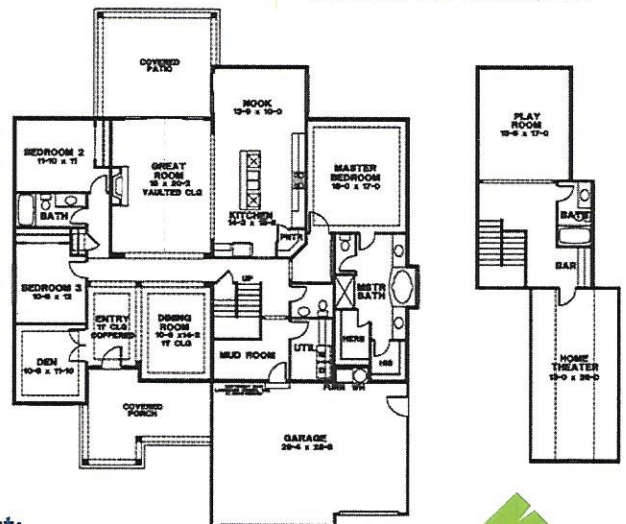
THIS HOME FEATURES a grand entry open to a formal dining room and a den or home office area. The large great room with gas fireplace is open to the spacious kitchen and nook along with a center island. Enjoy the oversized sliding door that opens to an outdoor patio area, ideal for summer time entertaining. The master suite features a 5-piece bath and large walk-in closet. Country living at it's best! Enjoy this gorgeous home on 1.5 acres.

3802

77TH AVENUE SE
OLYMPIA

OFFERED AT: \$589,950

- 3,434± square feet home on 1.5 acre lot
- 3 bedroom + den/bonus/theater room
- 3.5 bathrooms
- 3-car garage with openers
- Covered patio with propane gas stub
- Main floor master suite with dual walk-in closets
- Granite slab counters in kitchen & master bath
- Upgraded stainless steel appliances
- Oil rubbed bronze lighting, plumbing & door hardware
- Hardwood floors in entry, dining, kitchen & nook
- Crown molding & extensive white millwork throughout home
- Professionally landscaped with front & backyard irrigation
- Heat pump plus sub-panel for future shop
- GenTran panel



To schedule a private showing, contact:



Kim Showalter

360.791.2360 | kim@robrih.com

1868 State Avenue NE, Olympia, WA 98506



**ROB RICE
HOMES**

Creating Exceptional Communities Since 1985

www.robrih.com





3802 77th Ave SE , Olympia 98501

List Price: \$589,950

Rob Rice Homes master down 3 bdrm+den & 3.5 baths on 1.5 acres of country living in East Olympia just minutes to amenities! 3434 sqft w/gourmet kitchen w/hw flooring, upscale Kitchenaid appl, pull-out drawers on lower cabinets; slab granite counters w/one-level island. Master w/dual walk-in closets and 5 piece bath w/granite tops and tile shower. Covered patio w/propane stub, heat pump, gen/tran panel, sub panel for future shop. Lots more! Photos of similar house, under constr, est. completion Apr.

Directions : From Yelm Hwy, head south on Rich Rd SE; Left/East onto 74th Ave SE; road turns right onto Normandy St SE; 1st right onto 77th Ave SE; house at end of road.

ML#:	884479	Site Features:	Patio, Propane, RV Parking, Sprinkler System
Year Built:	2016	Lot Details:	Dead End Street, Secluded
Property Type:	Single Family	View:	
Tax ID:	39902500200	Roof:	Composition
Beds:	4	Style Code:	11 - 1 1/2 Story
Baths:	3.50	Total Covered Prkg:	3
Approx Square Feet:	3,434 sf	Parking Type:	Garage-Attached
Lot Sqft (approx):	65,177 sf	Exterior:	Cement Planked, Stone, Wood, Wood Products
Lot Acres (approx):	1.496	Interior Features:	Bath Off Master, Dbl Pane/Storm Windw, Dining Room, French Doors, Walk In Pantry,
Map Coordinates:		Energy Source(heat):	Electric, Propane
County:	Thurston	Heating/Cooling:	90%+ High Efficiency, Heat Pump
Community:	East Olympia	Floor Covering:	Ceramic Tile, Hardwood, Wall to Wall Carpet
School District:	Tumwater	Appliances That Stay:	Dishwasher, Double Oven, Garbage Disposal, Range/Oven
Elementary School:	East Olympia Elem	Lot Topog/Veg:	Level
Senior High School:	Tumwater High		
Bldg./Complex/Proj:	Chambers SS05112265TC		
Potential Terms:	Cash Out, Conventional, FHA, VA		

Presented By: **Kim Showalter**
 Contact: (360) 754-7010
 Fax: (360) 754-6602
 Email: kim@robricehomes.com

Epic Realty
 1868 State Ave NE
 Olympia WA 98506
 Email: kim@robricehomes.com