

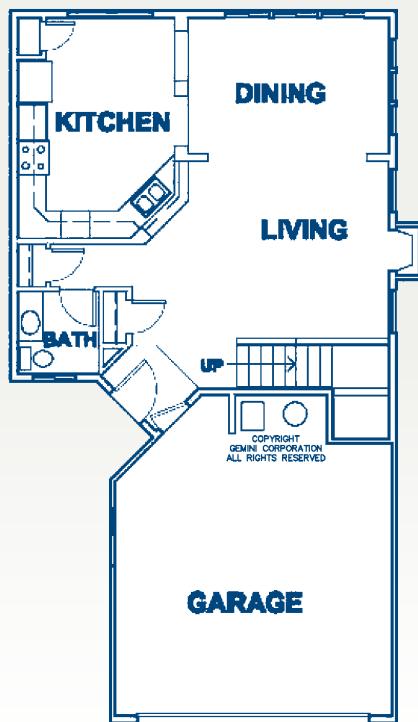
KENSINGTON



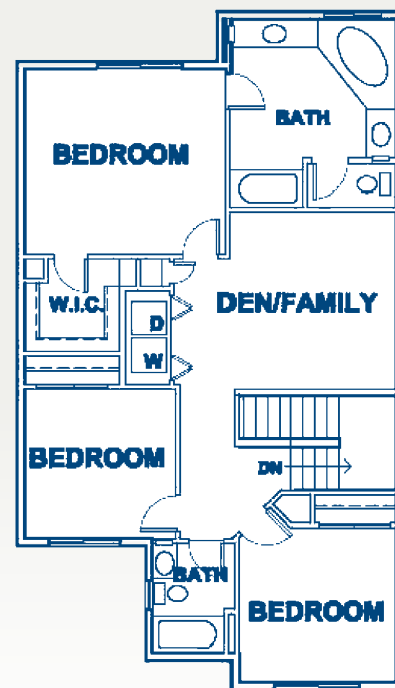
THE POPPY

- 1,940± square feet
- 3 bedrooms, 2-1/2 baths
- Granite counters in kitchen
- Hardwood entry, kitchen & dining
- 5-piece master bath
- Upstairs laundry
- Expansive patio (as allowed by permitting)

FLOOR PLAN #7270



MAIN FLOOR PLAN



UPPER FLOOR PLAN

© 1993 All rights reserved.

Builder reserves the right to make changes to plan and specifications without notice. Features vary by plan. Buyer to verify square footage. Homes in Kensington are built, sold & warranted by Avonlea Two, LLC, a separate entity that is a member of the Rob Rice Homes family of companies. 1868 State Street NE Olympia WA 98506 6/2013

ROB RICE
HOMES
Creating Exceptional Communities Since 1985



Kensington Sales Office: 360.456.5868

Visit us online at: www.robricehomes.com or www.facebook.com/robricehomes

6/7/13

